

A large, intricate, light-colored floral or mandala-like pattern radiates from the center of the page, filling the background. It features many overlapping circles and lines, creating a complex, symmetrical design.

# MIRUS AMPLE

*Your Dream Destination...*







## ABUNDANT SPACE, ABOUNDING LOVE

*Mirus Ample, as the name suggests, is an excellent size property promising a lavish lifestyle in the land of kings. The large family abode located in a supreme location and surrounded by lush landscape is a perfect place to raise your family.*

*Mirus Ample is a smart and swanky residential scheme built in innovative style and eco-friendly design, keeping in mind the lifestyle needs of upscale urbanites in India. With royal drive way, generous parking space with provision for guest parking and grand entrance lobby, the Ample transports you to another world. Bright and breezy foyers look inviting. You can use one of the two elevators or a broad staircase to reach the house of your dreams.*

*Mirus Ample features two bedroom and three bedroom apartments with highest standards of comfort and luxury. The apartment provides massive living space and dining area with open terrace. Spacious bedroom with french window integrated seating arrangements look inviting. Semi modular kitchen is the heart of the home. Natural light during the day and integrated lighting illuminate your home at night.*

*You will be amazed by the clustered floor plan, wonderful layouts and beautiful views from every apartment. Yoga hall and gymnasium are designed to ensure health and wellness of the resident. Landscaped terrace laced with roof top pool is a perfect place for outdoor entertainment. Well equipped and fully staffed society office is there to your smallest inconvenience. The Ample offers a generous abode to live an abundant lifestyle.*



## AMENITIES & SPECIFICATIONS

JDA Approved  
 Fully equipped club house  
 Premium Residential Apartments  
 Indoor Games Room  
 2/3 BHK Apartment  
 GYM & Yoga center  
 Ultra modern Landscape Garden  
 Power Backup  
 Earthquake Resistant Structure  
 Wi-fi zone  
 Landscaped lawn for Parties  
 Elegant Entrance Lobby  
 High Speed Elevators  
 Fire Fighting System  
 24 hrs security with Intercom Facility  
 Roof Top pool  
 Elegant bath accessories  
 Pool side Party hall for organizing community gathering, festivals & parties  
 Minutes away from all major development and huge future Potential.



### STRUCTURE

Earthquake resistant structure  
 R.C.C. frame structure -as per structure consultant design

### MAINTENANCE

Single windows maintenance agency  
 (plumber /electrician /carpenter)

### SECURITY

Round the clock security arrangement with CCTV surveillance

### POWER BACK UP

DG power back up for common areas

### FIRE FIGHTING SYSTEM

Fire fighting system as per NBC norms

### MODULAR-KITCHEN

Vitrified tiles/Marble flooring  
 Tile up to 2 ft above counter  
 Granite counter top with s.s sink  
 Point for chimney, geyser & other gadgets

### WATER HARVESTING

Rain water harvesting system as per statutory norms

### PARKING

Covered parking in basement and stilt floor and open surface parking  
 Visitors car parking

### LIFT

State of art elevators with automatic rescue device

### STAIRCASE

SS/MS railing  
 Anti skid ceramic tiles/granite

### CLUB HOUSE

Fully equipped gym  
 Ranging selection of indoor games like pool table, TT, carom, chess.  
 Library space, society office

### ELECTRICAL

Modern electric system with concealed copper wiring  
 Premium quality modular switch and accessories, Telephone / AC

### FLOORING

Vitrified tiles  
 Granite / tile / marble on lift and lobby

### FOYER

Combination / granite and acrylic emulsion

### LOBBY & CORRIDOR

Marble / tile/ natural stone

### DOORS & WINDOWS

Flush door 30/32mm  
 UPVC / Anodized /powder coated  
 Aluminum sliding glass windows  
 Good quality hardware fittings

### WALL FINISH

Plastic paints on external walls  
 POP finished walls & plastic paint on internal walls  
 Granite cladding on lift walls

### TOILET FITTINGS

Ceramic tiles  
 Anti skid tiles on floors  
 Premium grade C.P fitting and sanitary wares  
 CPVC /UPVC/PPR piping for water supply or Premium brand



## THE PROJECT

At Mirus Ample you will be amazed by the clustered floor plan, wonderful layouts and beautiful view from every apartment. Having 2 BHK and 3 BHK apartments Mirus Ample will have beautiful boudoir full of frills and frivolity. Mirus Ample offers a generous abode to live and abundant lifestyle.

## PROJECT HIGHLIGHTS

*Residential Project of Premium Apartments*

*2 BHK / 3 BHK Premium Apartments*

*Panoramic view from each & every flat*

*Exclusive Interior and Exterior*

*Modular Kitchen*

*Ultra Modern Clubhouse*

*Modern Gymnasium Aerobics Room*

*Multipurpose / Banquet Hall*

*Roof Top pool*

*Indoor & Outdoor Games*

*In proximity with Shopping Area*

*Near by major Business Center*







BASEMENT FLOOR PLAN



STILT FLOOR PLAN



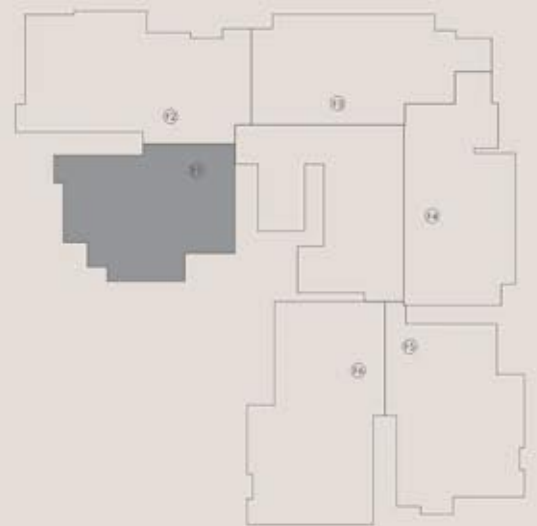


ISOMETRIC F1

F1      2BHK      1153.30 Sq.Ft.



FLAT F1 PLAN





MIRUS AMPLE



ISOMETRIC F2

F2      3BHK      1545.57 Sq.Ft.



FLAT F2 PLAN





ISOMETRIC F3

F3      2BHK      1234.33 Sq.Ft.



FLAT F3 PLAN





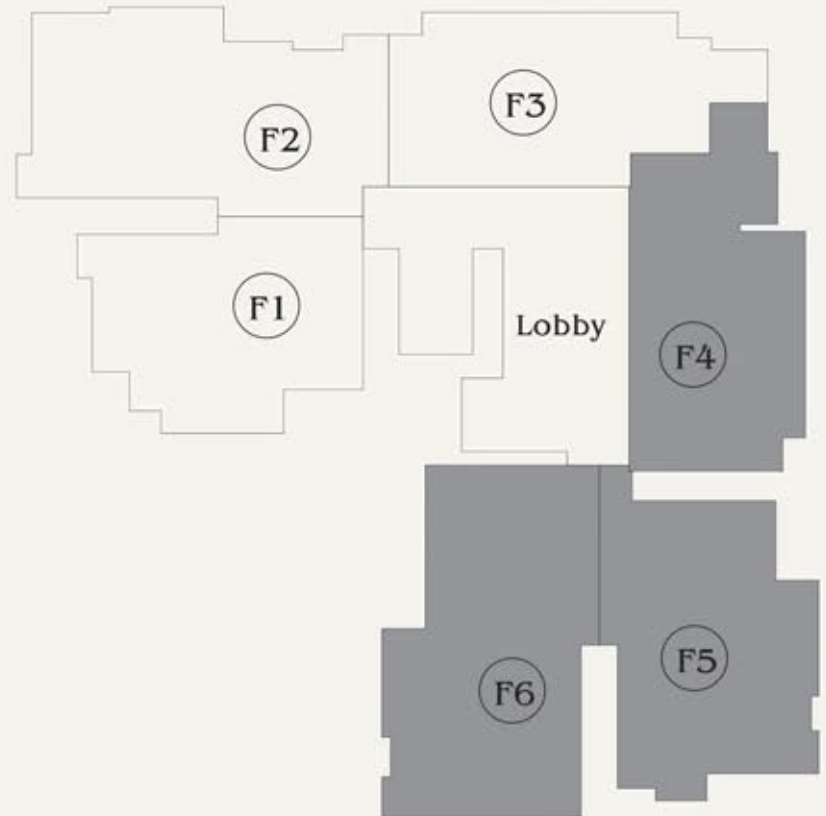
**FLAT F4 PLAN**

F4 2BHK 1277.00 Sq.Ft.



**FLAT F5 PLAN**

F5 2BHK 1300.33 Sq.Ft.



**FLAT F6 PLAN**

F6 3BHK 1499.76 Sq.Ft.





TYPICAL FLOOR PLAN







pool side VIEW



TERRACE ISOMETRIC VIEW





Gym Room



Meeting Room



Banquet Room



Game Room

# A MENITIES & SPECIFICATIONS



Terrace Garden



Reading Room





## Location & Roadmap

The Ample, even though in vicinity of SEZ and Mohana Mandi, is located in a quiet and peaceful residential area of the city. This part of the city is well planned and fully developed with commercial, medical, recreational and educational facilities. Easily accessible from Ring Road and Metro Station, the Ample is going to be a smart real estate investment with an impressive address.





MIRUS AMPLE

## Mirus infrastructure Pvt.Ltd.

*A rapidly growing organization involved in real estate development in and around Jaipur.*

*The organization believes in the motto that says "sky is not the limit but the beginning to explore something new." The company is a promising one and hitherto, has benefitted its customers a lot. The organization has young & dynamic people having experience of more than a decade in the field of construction & real estate. The organization has successfully completed many residential projects & are developing around Jaipur.*

*All the projects are designed by well known architects, taking care of all aspects for space management, quality of construction or the material used. All the government permissions are taken care of & make sure to complete the projects well in time. The organization has been successful in keeping its words with the clients. Thus resulting in developing homely relationship with them and giving them a peace of mind for dealing with a trustworthy group.*







*Mirus Infrastructure  
Pvt.Ltd.*

*Architect  
Pankaj Gupta & Associates*

Head Office:  
G-6, Cine Star, Central Spine,  
Vidhyadhar Nagar, Jaipur-302023

Corporate Office:  
Office no. 15, Fifth Floor, Jaipur  
Electronic Market, Ridhi Sidhi Crossing,  
Gopalpura Bypass, Jaipur-302018.  
Ph. 0141-5108887

Contact us  
Mob.+91-8875188887  
Website: [www.mirusinfra.com](http://www.mirusinfra.com)  
Email: [sales@mirusinfra.com](mailto:sales@mirusinfra.com)

**Site Address :** Parshvanath Narayana City, Kesar Circle, Mansarovar Ext., Jaipur

This brochure is not a legal document. It only describes the conceptual plan to convey the intent and purpose of the developers.  
The specifications and details mentioned in this brochure are tentative and subject to change at the sole discretion of the developers and/or the architects.